

Primary School Anti-bullying Policy

WPS provides a safe, inclusive, supportive and ordered learning environment free from bullying, discrimination and violence. Bullying, discrimination and violence are hurtful and destructive. These are not acceptable at WPS and will be dealt with seriously and expediently. Staff will work with the school community and other services / agencies to support our students in being responsible and productive members of the community.

“Bullying is an ongoing and deliberate misuse of power in relationships through repeated verbal, physical and/or social behaviour that intends to cause physical, social and/or psychological harm.

It can involve an individual or a group misusing their power, or perceived power, over one or more persons who feel unable to stop it from happening.

Bullying can happen in person or online, via various digital platforms and devices and it can be obvious (overt) or hidden (covert). Bullying behaviour is repeated, or has the potential to be repeated, over time (for example, through sharing of digital records).

Bullying of any form or for any reason can have immediate, medium and long-term effects on those involved, including bystanders. Single incidents and conflict or fights between equals, whether in person or online, are not defined as bullying.”

National definition of bullying
Education Council (2018)

Willunga Primary School Anti-Bullying Pledge

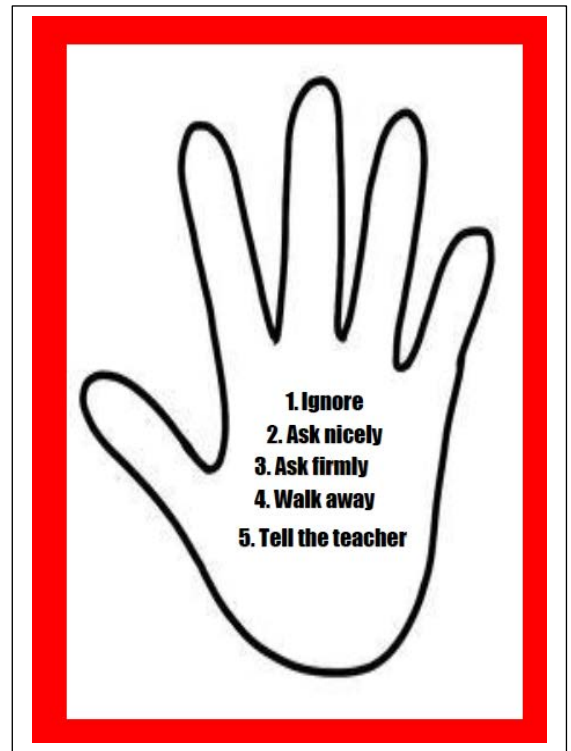
At Willunga Primary We All Belong

We promise to:

- Treat people as we want to be treated
- Be brave and stand up for each other
- Be a friend to everyone

If we see bullying we:

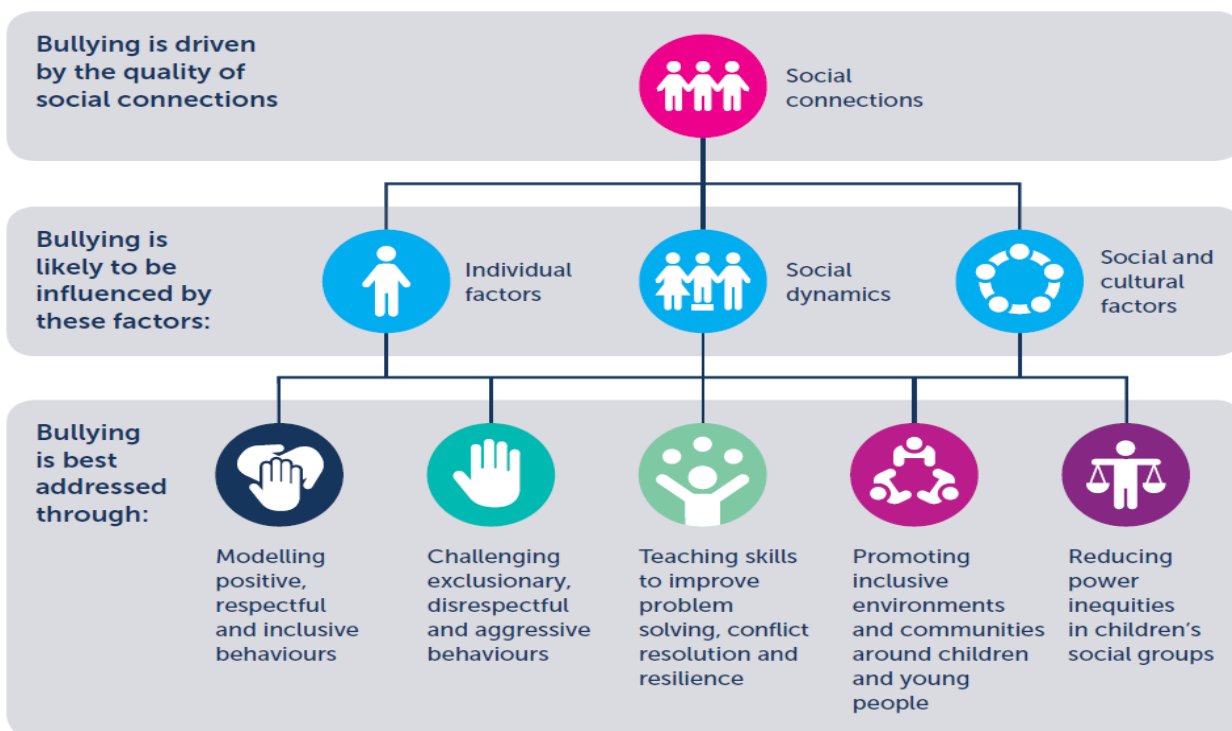
- See it
- Report it
- Stop it



ACTIONS

- Poster visible in all classes
- Discussed in community circle
- All new students inducted within 2 weeks of starting school by a leader
- Refresh all students in each term
- Bullying focus Term 3
- New families shown anti-bullying pledge on induction

South Australian Bullying Prevention Explanatory Model



How this will Happen

Prevent	Identify	Respond
<ul style="list-style-type: none"> • Model appropriate behaviour • Calm, controlled, fair • Regular community circle or check in • Child protection Curriculum • Term 3 focus Keeping Safe, whole school • “What’s the Buzz”, targeted approach • Bullying pledge for all students • Staff professional development 	<ul style="list-style-type: none"> • Term 3 focus, build vocabulary and strategies • Bullying survey 1 per year, reported to community • Community circles to identify and resolve bullying/friendship issues • Follow up reports and keep documentation • Identify trends • Clarify legal responsibilities and expectations • Electronic tracking of behaviours 	<ul style="list-style-type: none"> • Clear rules and guidelines • Community circles build language of inclusion • Tracking students support notes • Active supervision in class and yard • Individualised plans and response as needed

Willunga Primary School:

1. Uses the national definition of bullying	Term 3 Focus – Bullying, unpack with students Included in document
2. Identifies the steps that the school will take to prevent and reduce bullying	Term 3 focus Bullying survey Term 3 Community circles or daily check ins Tracking of students via T.A.S
3. Outlines how concerns about bullying can be reported and the steps the school will take to respond	Class teacher, leadership, yard duty teacher, SSO, specialist Community circles Share prevention model at Governing Council

	Steps taken <ul style="list-style-type: none"> • An investigation • Families contacted • SEE procedures in extreme ongoing cases
4. Outlines how children and young people involved in bullying incidents will be supported and safe	Restorative processes, separate play, ongoing monitoring, lose privilege Office intervention, check ins (daily)

Resources:

- Connected “A community approach to bullying prevention within the school gates and beyond”
- Community Circle time
- What’s the Buzz?
- WPS Behaviour code
- CPC – Keeping safe

Willunga Primary School Anti-bullying Policy – Appendix 1

Willunga Primary School Anti-Bullying Pledge

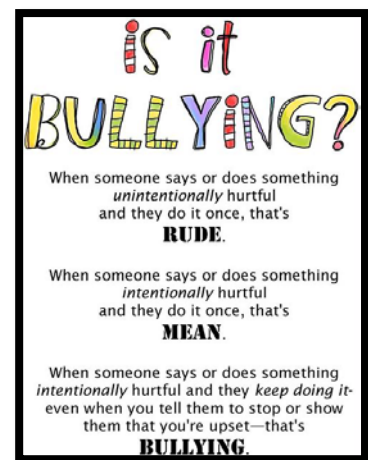
At Willunga Primary We All Belong

We promise to:

- Treat people as we want to be treated
- Be brave and stand up for each other
- Be a friend to everyone

If we see bullying we:

- See it
- Report it
- Stop it



Student Name: _____ Date: _____

Signature : _____

Willunga Primary School Anti-Bullying Pledge

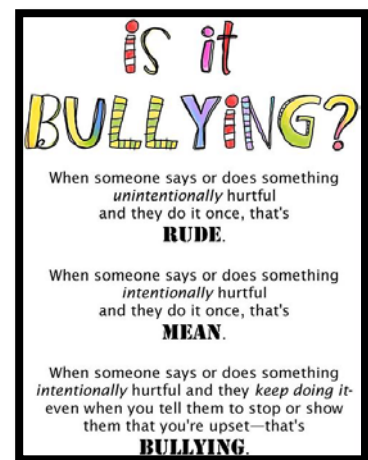
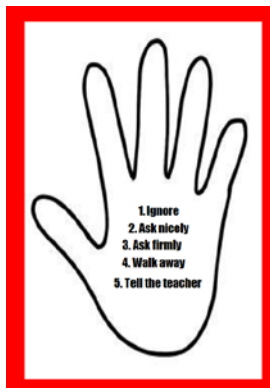
At Willunga Primary We All Belong

We promise to:

- Treat people as we want to be treated
- Be brave and stand up for each other
- Be a friend to everyone

If we see bullying we:

- See it
- Report it
- Stop it



Student Name: _____ Date: _____

Signature : _____