

2024 annual report to the Community

# Willunga Primary School

Willunga Primary School number: 744

Partnership: Sea & Vines



School principal:

Melanie Jones



Government  
of South Australia  
Department for Education

Date of endorsement:

06/02/2025

# Context Statement

Willunga Primary School caters for students from R-6. At the time of this report, the enrolment in 2024 is 369. Willunga Primary School is classified as Category 6 on the Department for Education Index of Educational Disadvantage. At the time of this report, the school population includes 3% Aboriginal students, 5% students with disabilities, 1% children/young people in care. Further information about the school is available on the school's website (including its context statement), as well as the My School website.

Data Source: Department for Education data holdings from Mid census captured in AUGUST 2024.

## Governing Council Report

We were very pleased to welcome two new parents and new staff to the Governing Council, benefiting from their broad experience and views. Building on the work of previous years, we continued to streamline the roles of the Governing Council and subcommittees, particularly for the refinement of policies with development and approval of the attendance, communications, digital technology and ICT and Sun Smart policies during 2024.

We enjoyed the constructive input from parents, caregivers, the SRC and Rec Park, particularly regarding the school grounds, canteen and uniforms. Plans are in place for a review of the dress code policy in 2025 and consideration of fundraising for increasing shade within the school grounds following three trees needing to be removed during 2024.

A new Assistant Director was appointed to OSHC and the service continues to grow and be managed well, providing the opportunity for investment into OHSC and school facilities in 2025. The canteen also continues to remain viable, providing an important service to the school community.

At the school level we were pleased with the strong financial position, ahead of another big year in 2025.

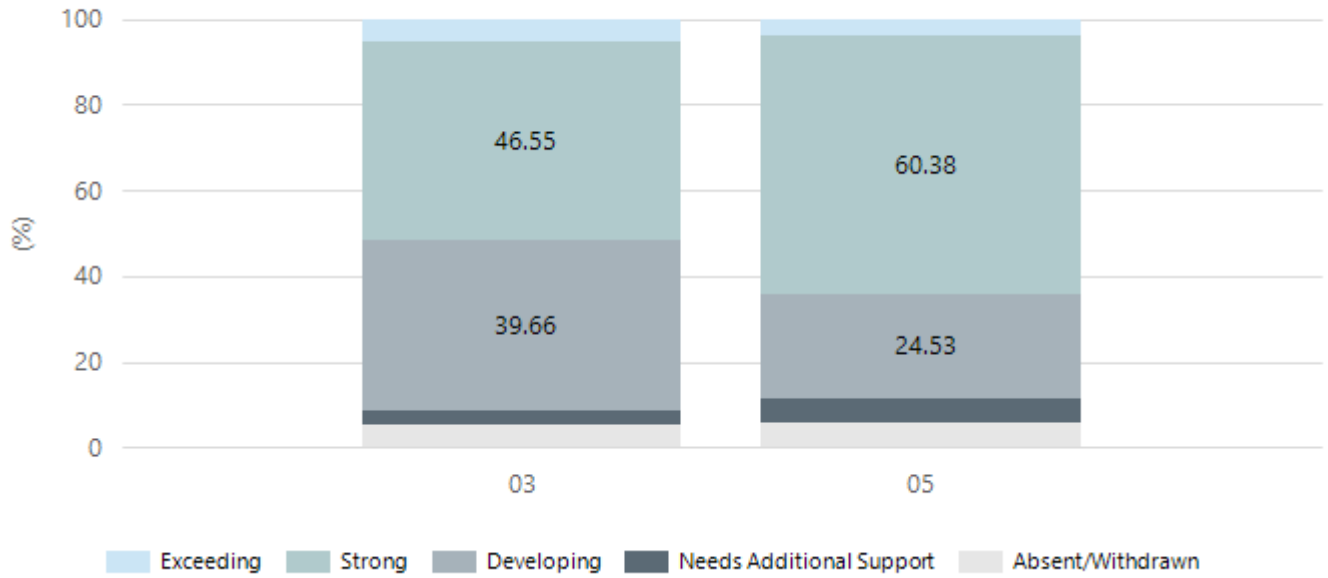
At a broader level we were extremely pleased to see great educational results for the school, made possible through the committed efforts of teachers and staff.

# Performance Summary

## NAPLAN Proficiency

In 2023 the Australian Curriculum, Assessment and Reporting Authority (ACARA) - a Commonwealth Independent statutory authority - announced changes to NAPLAN performance reporting. The new approach replaces the previous numerical NAPLAN bands and the national minimum standard.

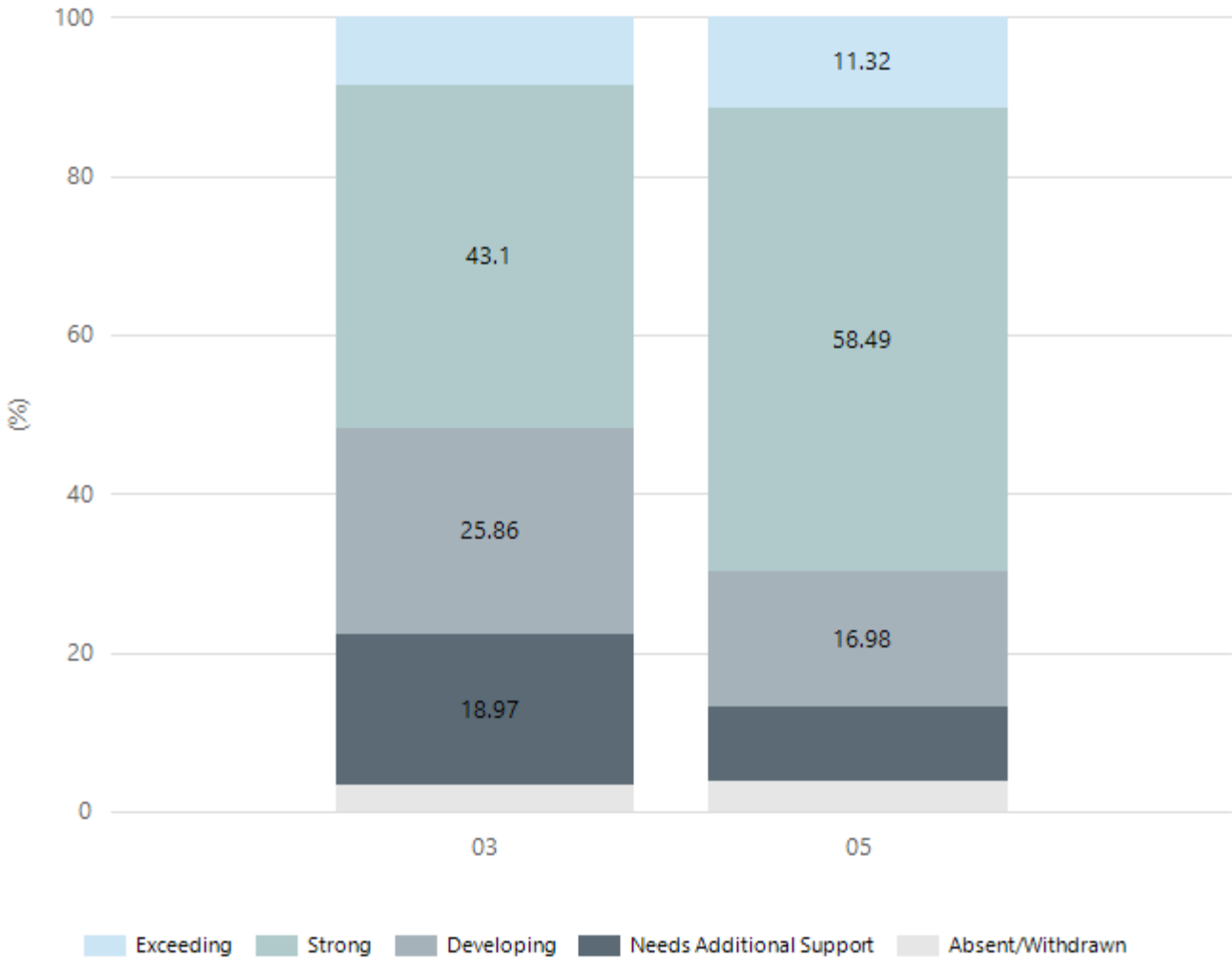
### Numeracy



Year Level	03	05
Exceeding	3	2
Strong	27	32
Developing	23	13
Needs Additional Support	2	3
Absent/Withdrawn	3	3
Total	58	53

Data Source: Department for Education Assessment Data Holdings, 2024. If there are less than 6 students who sat NAPLAN in a school, no information will be shown. If a year level has less than 6 students, that year level will not be shown in NAPLAN results.

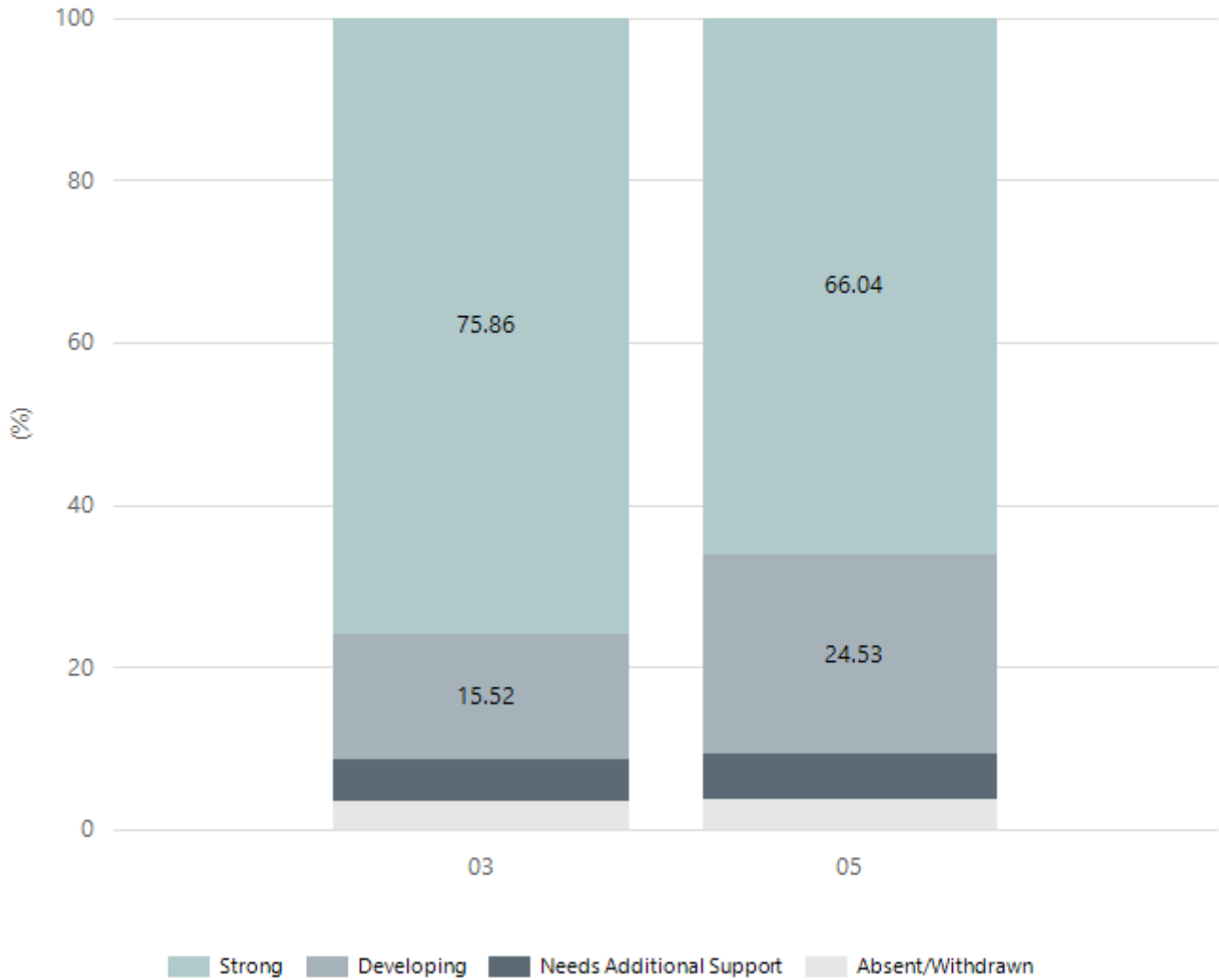
## Reading



Year Level	03	05
Exceeding	5	6
Strong	25	31
Developing	15	9
Needs Additional Support	11	5
Absent/Withdrawn	2	2
Total	58	53

Data Source: Department for Education Assessment Data Holdings, 2024. If there are less than 6 students who sat NAPLAN in a school, no information will be shown. If a year level has less than 6 students, that year level will not be shown in NAPLAN results.

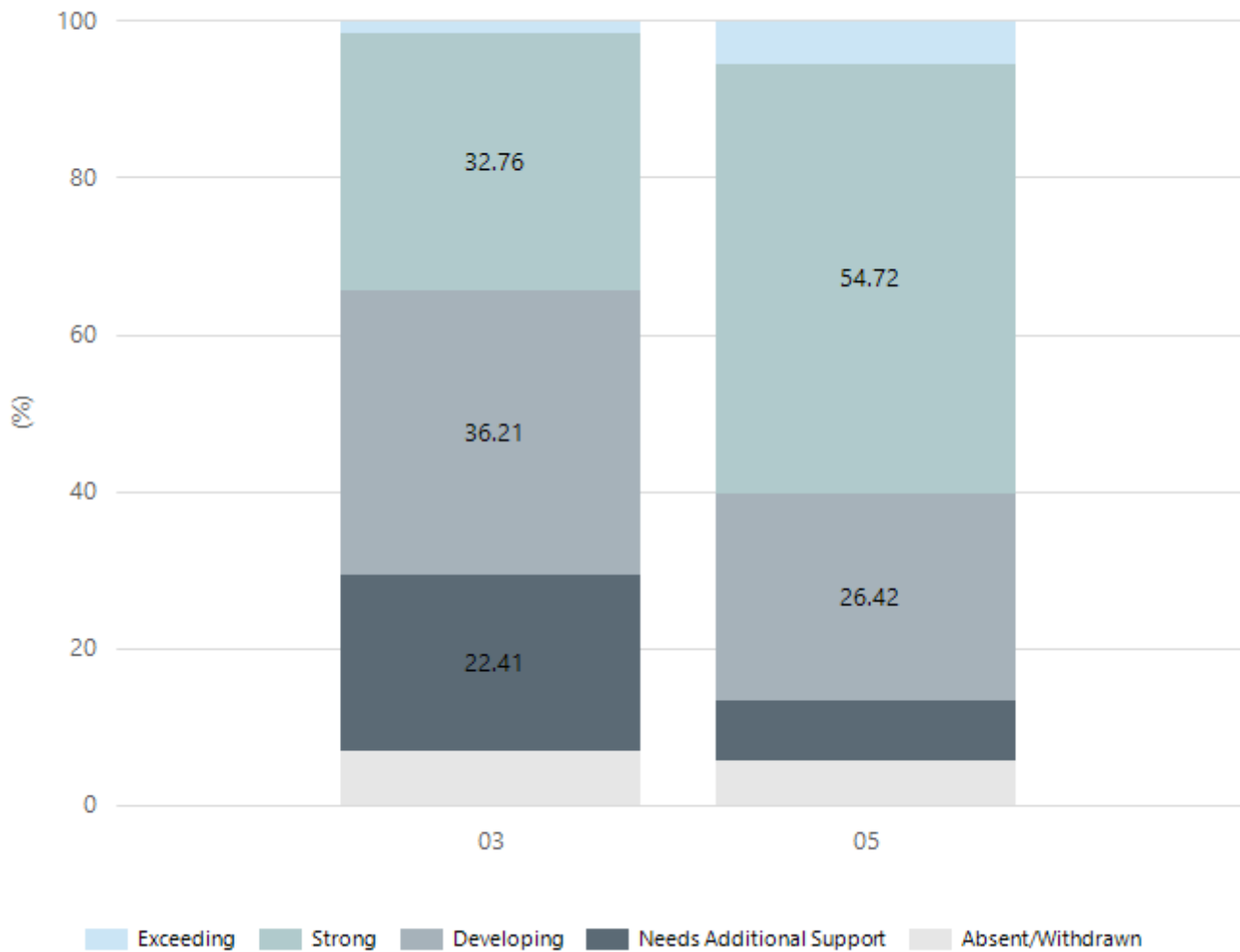
## Writing



Year Level	03	05
Strong	44	35
Developing	9	13
Needs Additional Support	3	3
Absent/Withdrawn	2	2
Total	58	53

Data Source: Department for Education Assessment Data Holdings, 2024. If there are less than 6 students who sat NAPLAN in a school, no information will be shown. If a year level has less than 6 students, that year level will not be shown in NAPLAN results.

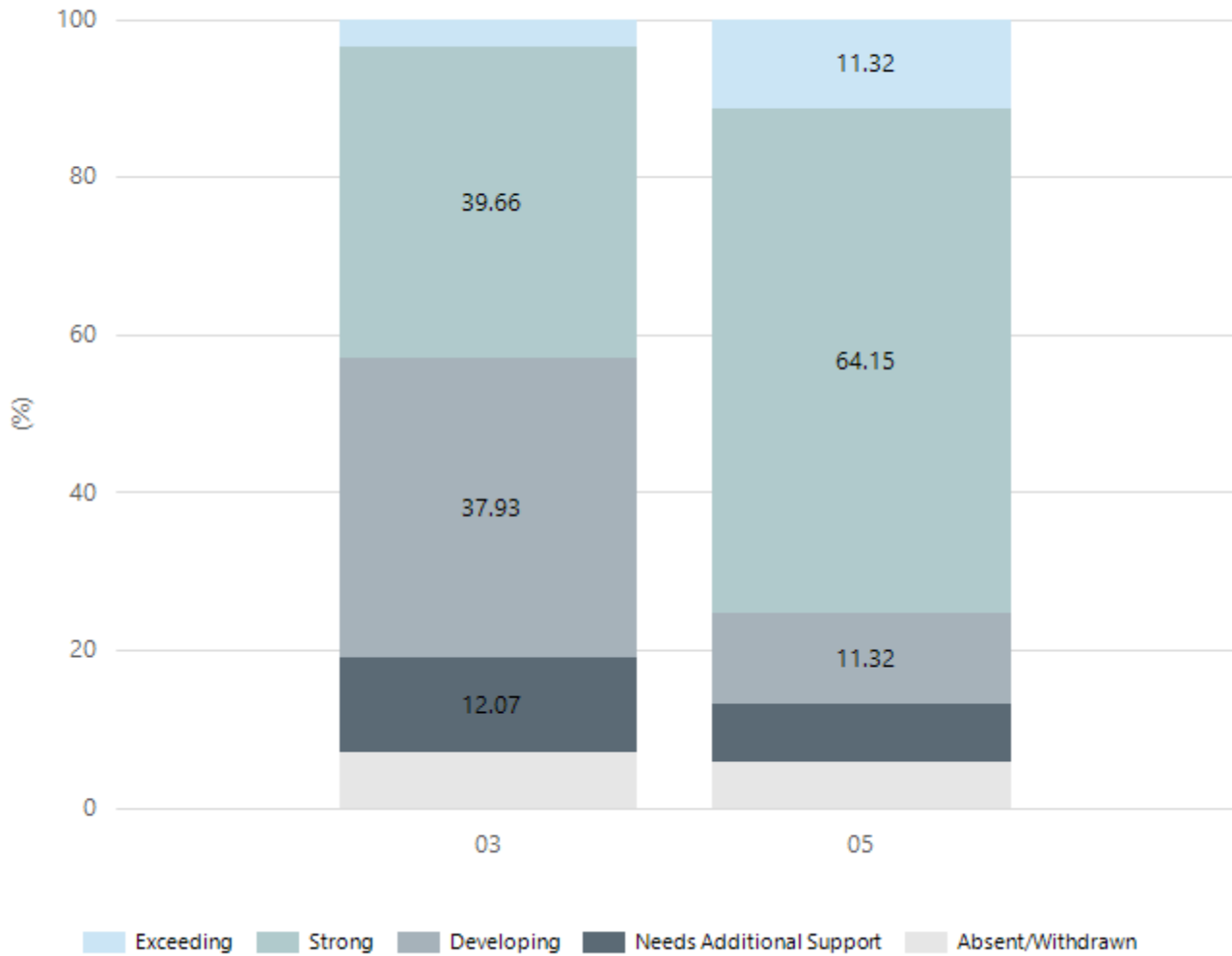
## Grammar



Year Level	03	05
Exceeding	1	3
Strong	19	29
Developing	21	14
Needs Additional Support	13	4
Absent/Withdrawn	4	3
Total	58	53

Data Source: Department for Education Assessment Data Holdings, 2024. If there are less than 6 students who sat NAPLAN in a school, no information will be shown. If a year level has less than 6 students, that year level will not be shown in NAPLAN results.

## Spelling



Year Level	03	05
Exceeding	2	6
Strong	23	34
Developing	22	6
Needs Additional Support	7	4
Absent/Withdrawn	4	3
Total	58	53

Data Source: Department for Education Assessment Data Holdings, 2024. If there are less than 6 students who sat NAPLAN in a school, no information will be shown. If a year level has less than 6 students, that year level will not be shown in NAPLAN results.

## School Attendance

Year Level	2022	2023	2024
Reception	88.6%	90.2%	90.2%
Year 01	87.5%	92.6%	90.4%
Year 02	85.9%	91.6%	86.4%
Year 03	85.3%	90.1%	88.0%
Year 04	85.1%	91.7%	88.6%
Year 05	85.4%	89.2%	88.0%
Year 06	85.0%	90.6%	88.2%
Total	86.1%	90.9%	88.6%

Data Source: Department for Education Attendance Data, Semester 1 Report 2024. A blank cell indicates there were no students enrolled. 'Primary Other' includes students enrolled in specialised education options. 'Secondary Other' includes students who have already spent a year at Year 12 and elected to undertake further study at Year 12.

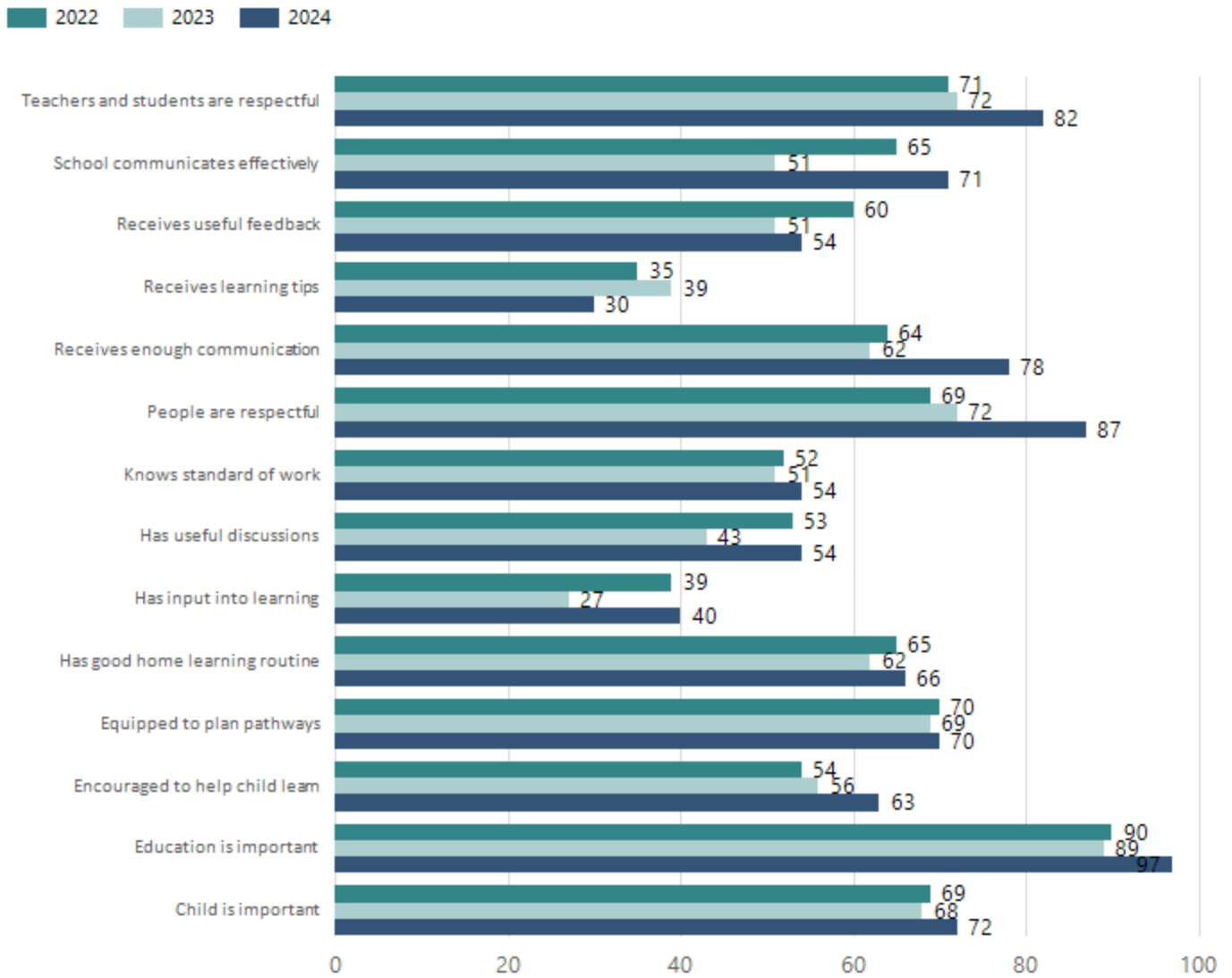
## Attendance Comment

In South Australia, all children and young people must be in school from 6 years to 16 years old. They must attend a government or non-government school full time. From age 16 to 17 however, young people must attend school or an approved learning program (such as an apprenticeship, traineeship, accredited course or university). Schools and parents must encourage and support students to come to school every day. Parents and caregivers must make sure their child is enrolled in a school, and attends school all day and everyday it is open, unless a child is sick or has an approved exemption. Teachers and leaders actively follow up when a student misses school, including recording all absences and non-attendance. All schools in South Australia have local attendance procedures governed under the Education and Children's Services Regulations 2020.



# School Parent Opinion Survey Results

Proportion of agree/strongly agree response(%)



Data Source: 2024 Department for Education Parent Opinions Survey, Term 3 2024.

## Intended Destination

Leave Reason	Number	%
EX - EXEMPTION	1	5.0%
IS - INTERSTATE	8	42.0%
NG - ATTENDING NON-GOV SCHOOL IN SA	4	21.0%
OV - LEFT SA FOR OVERSEAS	1	5.0%
TG - TRANSFERRED TO SA GOVERNMENT SCHOOL	2	11.0%
U - UNKNOWN	3	16.0%

Data Source: Department for Education Destination Data Report, 2024. Data extract term 3 2024. Data shows recorded destinations for students that left the school in the previous year. Data is uploaded by schools in term 3 and may not reflect final or total figures at time of report creation.

## Highest Qualifications held by the teaching workforce and workforce composition

All teachers at this school are qualified and registered with the SA Teachers Registration Board.

Qualification Level	Number of Qualifications
Bachelor's degrees or Diplomas	17
Postgraduate Qualifications	11

Data Source: Data extracted from Mandatory Workforce Information Collections as on the last pay date of June 2024. As self-reported by staff in the system.

Please note: Data includes staff who are Actively employed and on extended paid leave. Please note only the highest qualification of the Teaching staff is reported. Excludes any number of other certifications earned.

### Workforce composition including indigenous staff

	Non-Teaching Staff		Teaching Staff	
	Indigenous	Non-Indigenous	Indigenous	Non-Indigenous
Full-Time Equivalents	0.0	9.8	1.0	24.4
Persons	0.0	12.0	1.0	27.0

Data Source: Data extracted from Mandatory Workforce Information Collection as on the last pay date of June 2024.

Please note: Data includes staff who are actively employed and on extended paid leave. "Indigenous category" is self-reported by staff in the system.

## Financial Statement

Funding Source	Amount
Grants: State	\$4,042,759.77
Grants: Commonwealth	\$3,150.00
Parent Contributions	103,880.00
Fund Raising	22,035.04
Other	76,575.00

Data Source: School supplied data.